

ESTABLISHED SINCE 1873

 HOLY TRINITY CHURCH, SPILSBY RD, BOSTON, PE21 9NS  WWW.HOLYTRINITYBOSTON.ORG.UK

20 PARISH 25 PROFILE

Loving Jesus
Serving Others



HOLY
TRINITY
BOSTON

ESTABLISHED 1848

WELCOME

Welcome! As a church family we are delighted that you are looking at our Parish Profile. We are excited and looking forward to discovering who God is calling to lead us on this next stage of our journey.

As you will have seen on the website, our values state that at Holy Trinity we are seeking to be centred on Jesus, shaped by his word, dependent on his Holy Spirit, engaged in service and a family like no other. At PCC in March 2024 we remembered that Trinity was founded 175 years ago on the desire to share the Gospel with the people of the parish and beyond. Since those earliest days the family of Trinity has been guided by the historical understanding of biblical evangelical faith and rejoiced in the true freedom that Christ brings to all who receive him. This family of faith has always been open to all irrespective of background or outlook.

The PCC has found the Theological Vision, drawn up by a group of bishops on behalf of the Anglican Alliance <https://alliancecofe.org/#>, helpful in communicating our traditional evangelical faith.

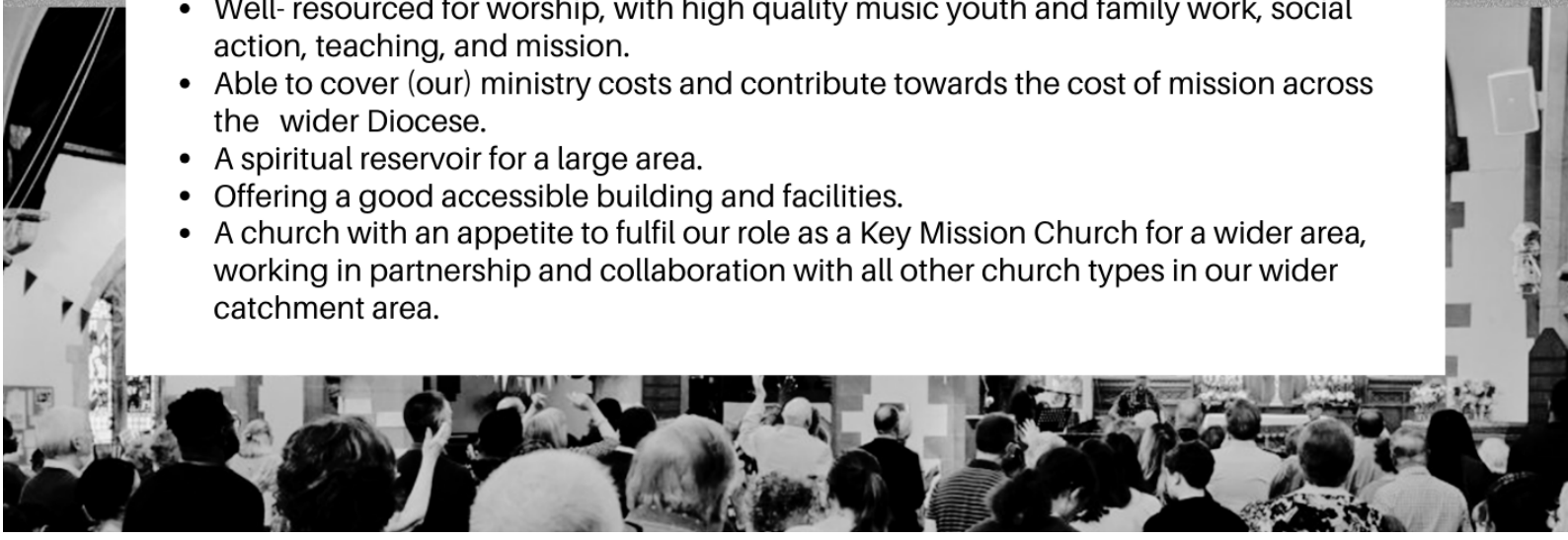
A Time to Change Together from the Lincoln Diocese:

A Time to Change Together (TTCT) is foundational to the Diocese of Lincoln's vision for our shared future. As a family of churches we are committed to serving our congregations and communities, as we seek to transform lives in Greater Lincolnshire. We pledge ourselves to collaborative partnerships, relationships of generosity and growth. Together, we are drawing deeply from the wells of God's love, found in every type and size of faithful community. We know the Church in this Diocese will flourish when the churches flourish. In order to flourish, we must work together. Our whole approach is to resource local churches to be the best they can possibly be.

Through this programme, Trinity is designated as a Type 1 Key Mission Church. (The Parish of Boston, locally known as Boston Stump, is the other Type 1 Church) We work together to serve the Deanery. At Trinity we tend to work more closely with the churches in local mission partnership North (LMP North) to the north of the Deanery and with churches in the Coastal Cluster and The Parish of Boston works with the churches in the south. (LMP South)

As described in the Type 1 classification we aim to be:

- Large, flourishing, confident, capable of significant growth;
- Well- resourced for worship, with high quality music youth and family work, social action, teaching, and mission.
- Able to cover (our) ministry costs and contribute towards the cost of mission across the wider Diocese.
- A spiritual reservoir for a large area.
- Offering a good accessible building and facilities.
- A church with an appetite to fulfil our role as a Key Mission Church for a wider area, working in partnership and collaboration with all other church types in our wider catchment area.



Statement of Needs 2024

Holy Trinity is a lively evangelical church. We believe that God loves us through his Son, Jesus Christ and that we are offered forgiveness and new life through faith in him. We seek to be empowered in all we do by God's Holy Spirit. Our worship, teaching and preaching must reflect this.

We are prayerfully seeking a God-centred person

- whose life is deeply rooted in prayer and is open to the direction and guidance of the Holy Spirit
- who is a strong spiritual, collaborative leader.
- who has a passion for evangelism, a heart for mission and will build on existing mission links.
- who can develop an effective outreach ministry to families and others in the 20-45 age range
- who is able to develop our worship, identifying and drawing upon the gifts of all church members, making it accessible to all within our community
- who will be able to support the staff team and Church Members in developing their giftings.

In return we offer our new incumbent:

- a welcome into our church family as we seek together to become 'a family like no other'
- our support in love and prayer
- an openness to the leading of the Holy Spirit
- a sense of anticipation and excitement as we move forwards
- a wealth of gifts within the church family
- a willingness to give of our time and talents
- the support of 4 lay readers and an ALM, two office administrators, a pastoral outreach worker, a youth and children's worker (position vacant since September 2024) and a prayer ministry team.

MISSION ACTION PLANNING (MAP)

Trinity has been involved in Mission Action Planning for many years. So what is it?

“Mission Action Planning is a process which enables a local church to prayerfully discern the priorities God has for it and to plan the mission activities it is going to undertake over the coming months and years. It is an accessible form of strategic planning and as such builds on the insights of businesses, schools, hospitals and other organisations, learning from their need to plan carefully if they are to thrive in a complex and challenging environment. A key part of the process is involving the whole church in seeking God’s purpose and developing a clear vision statement.”

We last met as a PCC and church family in September 2023 to revise and update our Mission Action Plan.

We described ourselves as:

A Key Mission Type 1 Church fulfilling a resourcing role in Lincoln Diocese, the Deanery Partnership and our Local Mission Partnership.

A church where teaching is biblical, mission is Jesus centered and empowered by the Spirit.

A church family which welcomes all and shares the love of Jesus with the local community and beyond.

A church which grows disciples of all ages who grow other disciples and new church families.



HOLY
BIBLE

Vision: Loving Jesus, Serving Others



We aim to be:

- Centred on Jesus;
- Shaped by his word;
- Dependent on his Holy Spirit;
- Engaged in service;
- A family like no other.

VISION AND VALUES



LIFE OF THE CHURCH



Services are very well attended. A weekly livestream of the 10:30 am service is available and some people choosing to watch from home. This has been particularly valuable for those who are too ill or frail to join us in person.



Music

Holy Trinity has long enjoyed a robust musical element within its worship tradition, drawing from a wide range of styles.

We are blessed with many talented musicians and currently have three music groups with a contemporary approach to supporting worship. These groups alternate for different services. A broad range of instruments are represented including keyboard, guitar, bass guitar, oboe, flute, drums and occasionally trumpet. In addition, our organist plays primarily for the monthly Holy Communion services and on leads on other occasions as appropriate.



LIFE OF THE CHURCH

Sunday Worship at Trinity

Sunday worship follows a monthly pattern with the main service being at 10.30am. The first Sunday of the month, 'Worship & Grow Together,' is our all-age family service. 'Worship Together' services are our format for the remaining Sundays, during which our children and young people attend their groups in the adjoining Trinity Centre. Our communion service, currently celebrated on the third Sunday of the month, attracts our largest numbers, and Trinity family members of all ages, nationalities and demographics are reflected in our congregation, many of whom take an active part.

During the service, there is systematic Bible teaching and preaching. Trinity has four Lay Readers, and an ALM, plus guest preachers from within the fellowship and neighbouring churches. Sung worship is predominantly contemporary but we enjoy a blend of old and new. Three music teams cover most of the 10.30am services, with an organist on third Sundays. All are welcome to join the 10 o'clock prayers before each Sunday service, with members of the Prayer Ministry team available after the service to pray alongside individual members.

8.30am - a smaller, more reflective communion service on second, fourth & fifth Sundays

6.30pm - 1st Sunday Holy Communion and Occasional evening Celebration Services and African Praise

4.00pm - Messy Church, held on the afternoon of the third Sunday

Christmas and Easter church services have the biggest attendance of the year with many additional events.

Other local congregations use the Church premises for their worship on Sundays and during the week. We have a Romanian Church who use the Trinity Centre every Sunday afternoon for their weekly service and every Tuesday evening for a prayer meeting. The local Syriac Church use our Church every 2nd Sunday for a service of Holy Communion.

Small Groups

There are ten small groups at present, meeting either weekly or fortnightly in members' homes for fellowship, Bible study, prayer and mutual support, with around 80 church members currently part of one or more groups. Groups often follow the current sermon series but are free to choose their own material and some recent studies have included Micah, 1 John, Acts, The Romans Course and a thematic study on the Holy Spirit.



Pastoral care within this church is a multifaceted aspect of ministry that focuses on providing emotional, spiritual, and practical help to members of the congregation and the wider community. To best support those in need, we respond to individual referrals and liaise with organisations and service providers, both locally and nationally. This is overseen by the Pastoral Outreach Worker, who is also supported by a team within our parish.

The Pastoral Outreach Worker oversees caring for the sick, elderly, or housebound members of the congregation with special responsibility for the lonely and isolated. This may include hospital visits, home visits, or nursing home visits to offer comfort, prayer, and companionship to those who are isolated or struggling with health issues. In addition to this we conduct care home services once a month.

For those who are unable to attend our Sunday Church services, we have dedicated members who administer Home Communion.

Pastoral Care is also offered to the wider community through our Community Lunch which is an informal meeting open to anyone from all walks of life to have lunch and fellowship on the second Monday of each month.

Overall, pastoral care at Holy Trinity aims to embody the love, compassion, and ministry of Jesus Christ, offering support and guidance to individuals at various stages of life's journey. It is a vital aspect of nurturing a thriving and supportive faith community where individuals can find spiritual nourishment.



YOUTH & CHILDREN



Our Aim:

For all children and young people to know...

- that God loves them and accepts them as they are,
- they can have a personal relationship with God through Jesus,
- that they can be empowered by the Holy Spirit



Our Vision:

We want to see children and young people:

- excited by God,
- disciplined and equipped to follow God,
- be provided with places where they can meet with God, and can listen and respond to Him,
- be involved in ministry!

Sunday Mornings 10:30 am Groups

Other than on the first Sunday of the month when the 10.30am service is all-age, there are separate groups for our 3-14 year olds during our main service.

Climbers (Pre-school/ Key Stage 1) and Explorers (Key Stage 2) meet in the adjacent Trinity Centre.

Pathfinders (Key Stage 3) also meet in the Trinity Centre.

All groups begin the morning in church before moving to their groups. There are toys available for younger children and their parents in the church lounge, where the service is screened.

Sunday Evenings 7:00 pm CYFA

At CYFA we enjoy socials together once a month to build community and develop relationships and meet for a relaxed and informal Bible study the other Sundays of the month.

We believe the Bible together is a key method of discipleship



YOUTH & CHILDREN

During the Week

Trinity Tots (Wednesday morning from 9am during term time):
Toys and activities for babies, toddlers, parents, and carers

Milkshake Shack every Wednesday at 3:00 pm in term time
Milkshakes, snacks, board games, craft, lego and much more after school, there is tea and coffee and snacks for the parents/carers.

Messy Together (4th Sunday afternoon of the month):
Fun activities, songs, and games for all around a Bible study, followed by a light tea. No need to get "messy" unless you want to! All are welcome, however young, or old.

Throughout the Year:

Mission

Youth from Trinity have previously taken part in mission trips to the YWAM (an international mission organisation) base in Arua, Uganda and helped on Scripture Union Hungary summer camps. Closer to home there are ample opportunities to volunteer for teams at events such as Spring Harvest, New Wine, and the Sutton-on-Sea beach mission, or to volunteer even more locally at one of our youth events.

Holiday Club & Activity Days

Trinity usually runs a summer Holiday Club, an annual Light Party, and Pancake Party. We also run activity days which are sometimes themed around the time of year.

Youth-led Services

Every two to three-months, young people are invited to take a lead in our 'Celebrate Together' service. This can take any form, and has previously involved young people hosting the evening, writing quizzes and coming up with silly games to do with the congregation, as well as a guest speaker sharing something from the Bible.

Residentials

Residentials are an important time for young people, providing opportunities for deepening faith and friendships. These can be part of a larger event, time away as a church group.





Committees

There are various committees which look after the running of the church:

PCC - meets 10 times per year, currently 24 members

Standing Committee - meets as required, currently 5 members

Fabric and Finance - meets alternate months, currently 8 members

Courses

We currently run Bible and Pastoral courses, including Alpha, Discipleship Explored, The Bible Course, The Romans Course and The Bereavement Journey. We will continue to develop these and take up any new opportunities, resources and programmes that may arise.



EATING AT TRINITY

Hospitality is a huge part of the Trinity welcome! Coffee - good quality coffee - is served after morning services and regular 'bring & share' lunches are a significant element of our timetable. Our lounge and kitchen facilities are another way in which we're able to support the deanery as the venue for clergy meetings, short courses and information events.

Trinity Café - A café is held once a week within the church lounge, open to all members of the community. We serve light lunches such as jacket potatoes, sandwiches and weekly specials. Along with an array of cakes, scones and teacakes.

Community Lunch - This meets the 2nd Monday of each month and averages around 40 diners. We have a great group of volunteers to help with the cooking and currently have 2 chefs. It is always a fun atmosphere.

There is a short pause for thought between courses.



CHURCH ACTIVITY

Date	Sunday services	Weekday	Support	Meetings in church lounge	Evening
Week one	10.30 All age Worship & Grow Together 6.30 Holy Communion		Sound Visual Music – Youth Band	Wednesday: Trinity Tots 9.00-11.45 Wednesday: Milkshake Shack 3:00—4:30 pm Thursday: Trinity Café 11:30 am— 3:30 pm	
Week two	8.00 Holy Communion 10.30 Worship Together		Sound Visual Music - band Sound	Saturday :Mission Prayer Breakfast8:30 –9.30 Monday: Community Lunch 1:00—3:00 pm Wednesday: Trinity Tots 9.00-11.45 Wednesday: Milkshake Shack 3:00—4:30 pm Thursday: Trinity Café 11:30 am— 3:30 pm	Tuesday PCC
Week three	10.30 Worship Together with Holy Communion 6:30 pm Celebrate Together	Thursday Communion and Coffee 11:00 am	Visual Music-organ/key-board	Wednesday: Trinity Tots 9.00-11.45 Wednesday: Milkshake Shack 3:00—4:30 pm Thursday: Trinity Café 11:30 am— 3:30 pm	Finance and Fabric every other months
Week four	8.00 Holy Communion 10.30 Worship Together 4.00 Messy Together		Sound visual Music band Sound	Tuesday-Hour of Prayer on Zoom 10.30 am Wednesday: Trinity Tots 9.00-11.45 Wednesday: Milkshake Shack 3:00—4:30 pm Thursday: Trinity Café 11:30 am— 3:30 pm	
Week five When there is one	8.00 Holy communion 10.30 Worship Together		visual Music ad hoc	Trinity Tots 9.00-11.45 Milkshake Shack 3:00—4:30 pm Thursday: Trinity Café 11:30 am— 3:30 pm	

Ladies Fellowship -

The ladies fellowship meets to encourage the ladies within the fellowship. Meetings take place on the fourth Saturday of each month. Various activities are arranged such as Afternoon Tea, film shows, Bible studies, dance and movement to worship music and interviews with an author and with a local PCSO.

There have been visits in the past to ladies' conferences such as New Wine "Winter Glory" and 'Harrogate Ladies Day". They now look for events which are more local. Other social evenings and events have included Quiet Days, meals out together and a walk in the Country Park.

The aim is to work in fellowship to find God in everyday things, to share and support one another while having fun and laughter.



BAND OF BROTHERS

The Holy Trinity Men's Group

“ —
Our aim is to get to know Jesus , try and live this out . Work so it impacts on ourselves our families and the community around us. — ”

Fancy strap line out the way!

Who we REALLY are is a group of ordinary men from different backgrounds who start out meeting at church, often there with a spouse or friend. We can find the Church structure to be "women orientated" because let's face it guys they're better than us at this socialising stuff, often are able to remember things and generally mix better than we do.

So, to keep it uncomplicated what we are doing is trying to build a community by growing links and friendships between us, not always easy. We work to arrange events that we can bring our non-Church friends to, we bless local businesses by visiting them. We permeate these with word and also at some events by testimony in getting one of our number to speak of their life , family, their job and faith journey, so far. No better way to get to press the fast forward button in getting to know someone. We've made some astounding, hilarious, inspiring discoveries about each other.

You'll find us frequenting Restaurants, Walking and Talking, Go Karting, Comedy Nights, BBQ's, Bowling, Men's Breakfast's, Dinners with speaker (more eating there too I guess) we are found at New Wine and Spring Harvest and get recourses from Christian Vision for Men.

We look to move with our new incumbent and work with them as we "live this out , make it impact on ourselves, our families and the community around us. So not just a strap line ..."

For more information , see below this beautiful sample of Unfinished , Strong , Encouraging, Crazy, Broken, Regretful, Loyal, Unwell, Grumpy, Impatient, Respectful, Spiritual and Godly bunch of guys .



Meet Our Team



Youth & Children's Worker
Post currently vacant



Pastoral Outreach Worker
Susan Mathews



Church Administrator
Nikki Jackson



Assistant Administrator
Sue Ward



Lay Pastor/Reader
Nigel Andrews



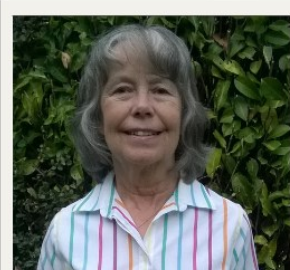
Reader
Sola Taiwo



Reader
Dave Parkinson



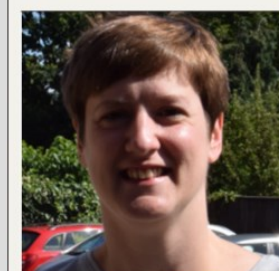
Reader
Paula Sargeant



Authorised Lay Minister
Barbara Parkinson



Churchwarden
Francis Abiodun



Churchwarden
Heather Percival

Mission Partners

Being part of the worldwide church is important to us. We support the work and ministry of our Mission Partners in the UK & overseas.



Parochial Church Council of Holy Trinity Church Boston

Balance sheet

As at 31 December 2023

		Unrestricted funds £	Restricted funds £	Endowment funds £	Total funds 2023 £	Total funds 2022 £
	Notes					
Fixed assets						
Tangible assets	5	270,060.24	-	-	270,060.24	269,410.80
		270,060.24	-	-	270,060.24	269,410.80
Current assets						
Debtors	6	16,708.99	2,686.12	-	19,395.11	48,131.39
Cash at bank and in hand		205,236.37	35,666.60	-	240,902.97	105,400.17
		221,945.36	38,352.72	-	260,298.08	153,531.56
Liabilities						
Creditors: amounts falling due within one year	7	10,636.53	1,161.47	-	11,798.00	4,577.52
Net current assets or liabilities		211,308.83	37,191.25	-	248,500.08	148,954.04
Total assets less current liabilities		481,369.07	37,191.25	-	518,560.32	418,364.84
Net assets or liabilities		481,369.07	37,191.25	-	518,560.32	418,364.84
The funds of the charity	8					
Restricted income funds		-	37,191.25	-	37,191.25	25,976.06
Total designated funds		296,633.83			296,633.83	286,911.68
Total unrestricted funds		184,735.24	-	-	184,735.24	105,477.10
		481,369.07	37,191.25	-	518,560.32	418,364.84

Approved by the Parochial Church Council on 24th March 2024 and signed on its behalf by

Rev. Lis Ward
Vicar

Edward Barkham
Church Treasurer

FINANCES

Statement of financial activities

For the year ending 31 December 2023

	Notes	Unrestricted funds £	Restricted funds £	Endowment funds £	Total funds 2023 £	Total funds 2022 £
Income and endowments from						
Donations and legacies	2(a)	219,337.73	6,980.12	-	226,317.85	131,870.23
Investments	2(b)	6,023.65	1,181.66	-	7,205.31	1,426.73
Income from charitable activities	2(c)	9,845.26	-	-	9,845.26	9,029.52
Other income	2(d)	12,318.55	36,581.65	-	48,900.20	56,893.45
Hall income	2(e)	25,292.45	-	-	25,292.45	21,582.48
		272,817.64	44,743.43	-	317,561.07	220,802.41
Expenditure on						
Costs of generating voluntary income	3(a)	-	-	-	-	77.17
Cost of generating funds	3(e)	4,806.50	-	-	4,806.50	4,219.20
Expenditure on charitable activities	3(b)	114,449.64	31,086.62	-	145,536.26	148,585.89
Other expenditure	3(c)	39,638.12	2,441.62	-	42,079.74	54,393.10
Hall expenditure	3(d)	24,943.09	-	-	24,943.09	18,734.12
		183,837.35	33,528.24	-	217,365.59	226,009.48
Net income /(expenditure) resources before transfers		88,980.29	11,215.19	-	100,195.48	(5,207.07)
Gross transfers between funds - in		74,293.57	33,244.13	-	107,537.70	111,345.87
- out		(74,293.57)	(33,244.13)	-	(107,537.70)	(111,345.87)
Net movement in funds		88,980.29	11,215.19	-	100,195.48	(5,207.07)
Balances b/f 1st Jan 2023		392,388.78	25,976.06	-	418,364.84	423,571.91
Balances c/f 31st Dec 2023		481,369.07	37,191.25	-	518,560.32	418,364.84

Church Premises

Our Church Building
built in 1848



Adjacent to the Church, The Trinity Centre has meeting rooms, the Church Office, kitchen facility, a sports hall & toilets. This is hired out in term time to a pre-school

Opposite the Church we have a detached house which is usually occupied by the Youth & Children's Worker. This is held in trust on the PCC's behalf



Church Premises

Since our church building was built in 1848 it has undergone various building projects and transformations, including electric lighting, gas boilers and a lounge extension with a commercial kitchen. This multi-functional room opens into the back of the church and enables us to host events such as the Community Lunch, Milkshake shack, Trinity Café, youth and children's events, courses and overflow space for large services.

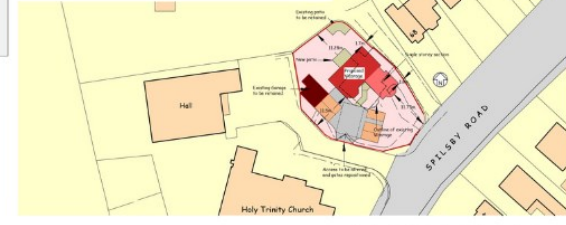
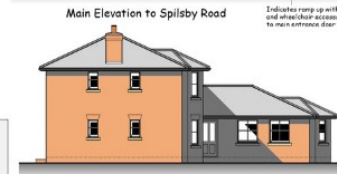
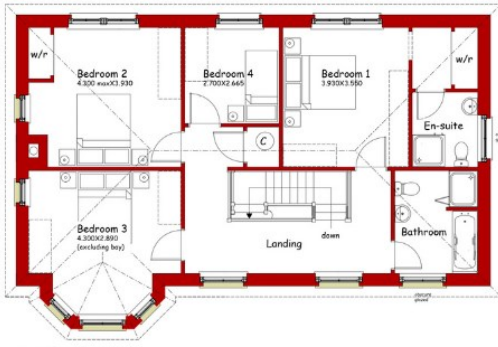
Over the last two years we have been exploring how to reorder the inside of the church to make accessible for all the church family, and more flexible for worship. We want to make space for those in wheelchairs to sit with their friends and enable families with sleeping children in buggies to sit together.

This is a big project and will mean removing the pews, levelling the floor and much more.

Plans have been drawn up and there has already been a face-to-face meeting with DAC. The financial cost is high, so the project has been on the backburner for the last year, however we have recently been in receipt of a significant legacy (in excess of £300,000) which could cover the cost and allow us to move forward with the project.

We will hold a period of consultation with the congregation in March 2025 to get their views.

This is such an exciting time for us here at Holy Trinity. As our Vicar we would love you to share our vision and play your part in the planning and delivery of this project, working with us to make the building welcoming and suitable for all, and an effective, vibrant, dynamic worship space for the present and future needs of the church.



DIocese of LINCOLN
faithful · confident · joyful

Scale bar: 0 0.5 1 1.5 2 2.5 3 3.5 4 4.5 5m
Scale bar: 1:500

Revision: 15/08/15 - Revise floor plan to reflect photographic information from site location
Revision: 15/08/15 - Revise floor plan to reflect photographic information from site location
Revision: 15/08/15 - Revise floor plan to reflect photographic information from site location

Lincoln Diocesan Trust and Board of Finance
Replacement Vicarage

64 Spilsby Road, Boston

Proposed Floor Plans, Elevations and Block Plan Layout

date: 15/08 and 15/09/15
scale: A1

15 / 008 / L / 04
author: B
revision: B

drawn by: A/B
Floor Plans
© copyright reserved

sra architecture

sra architecture
Rural House, Deepdale Enterprise Park
Barnesley, Yorkshire, YO22 8JZ
Tel: 01430 89 01 21 Fax: 01430 89 01 21
Email: sara@sra-architecture.co.uk





DESCRIPTION OF THE PARISH

The parish of Holy Trinity, Boston (Skirbeck) is located to the north-east of the town, and includes both the town's cemetery and the second largest hospital in the county, with its own chaplaincy team. The northern parts of the parish stretch as far as the rural hamlets of Cowbridge and Hilldyke and one of the town's two very popular golf clubs, whereas the southern area is more densely populated. Very close to Holy Trinity are three nursing homes and two supported housing complexes.

The population of the parish is approximately 9000, living in around 6000 homes, most of which are privately owned. Holy Trinity is a single parish benefice and has 261 people on its electoral roll, 53% of who are resident within the parish. The congregation is increasingly multi-cultural.

The main church building was constructed in 1848, for which we have a lightning strike to thank! Lightning destroyed Blades Mill and the then Rector of St Nicholas, William Roy, seized the opportunity to build using private funds. By 1849 the new parish church of Holy Trinity, on the site where the mill used to stand, was consecrated by the Bishop of Lincoln. With the addition of the lounge annex in 1987 the church has been able to host a number of activities and events for both Church and local community. The church is well cared for and services are enhanced by a good audio visual system and our morning services can be seen each week on YouTube @HolyTrinityBoston.

LIVING IN BOSTON



The market town of Boston lies on the East coast of England. Its historic port still functions to this day. The Borough of Boston's has a rapidly growing population which currently stands at approximately 70,500 (2021 Census). The population size has increased by 9.1%, in the last 10 years. This is higher than the overall increase for England (6.6%). Of this 70,500 75% were born in England, 5.6% in Lithuania and 5.4% in Poland. This represents a significant change in the past 20 years. As in other market towns, the impact of online shopping on Boston's market place and high street are noticeable. However, there are now several, sizeable, out of town shopping areas.

The four orders of monks who came to Boston in the 13th century saw their friaries closed as a result of the Dissolution of the Monasteries in 1539. The refectory of the Dominican Order has been restored to become the popular Blackfriars Theatre and Arts Centre. Boston's most notable landmark the fourteenth century St Botolph's Church (The Stump) is one of the largest parish churches in England. With one of the highest towers in England it is visible in the flat lands of Lincolnshire for miles. In its shadow sits the Market Place, a recognised tourist attraction in its own right with numerous stalls offering a diverse and attractive range of goods, services and fresh local produce.

No commentary on Boston could fail to mention the famed Pilgrim Fathers who were brought before the court at Boston's Guildhall, a building that remains a popular tourist attraction and still houses the town's Royal Charter of 1545.

Boston today is primarily an agricultural area but with an increasingly cosmopolitan feel as agriculture and service industries thrive. The Borough of Boston is a strategic location for major national and international food businesses, and home to Agri-food supply chains. We have recently welcomed a growing number of Eastern European residents to support these industries.

For the athlete, there are many local sports clubs. The town boasts a sports and leisure centre, a swimming pool and The Princess Royal Sports Arena. It provides extensive sport and recreational facilities for everyone. Boston also has a multi-screen cinema, a bowling alley a music centre and a theatre.



LIVING IN BOSTON



Travelling by car, Lincoln and Peterborough are less than an hour away and Nottingham about an hour and a half. There is a railway station connecting to Grantham and Skegness. The local marsh coast, with its Frampton Marsh RSPB reserve and Site of Special Scientific Interest, can be reached in about ten minutes. This provides close views of the abundant birdlife of The Wash. The edge of the Lincolnshire Wolds, an Area of Outstanding Natural Beauty, lies 14 miles north of the town, while the nearest beach at Skegness is 25 miles away.

There are a number of primary schools within Boston town, two of which are in the Parish. There are three secondary schools within the town, two of which are grammar schools under the county's current selective secondary education system. Two of the secondary schools are located within the Parish. Members of local churches, including Holy Trinity, are welcomed into many of the schools to assist in supporting the curriculum. Boston College of Further Education, which offers education opportunities up to degree level, is centrally located.

